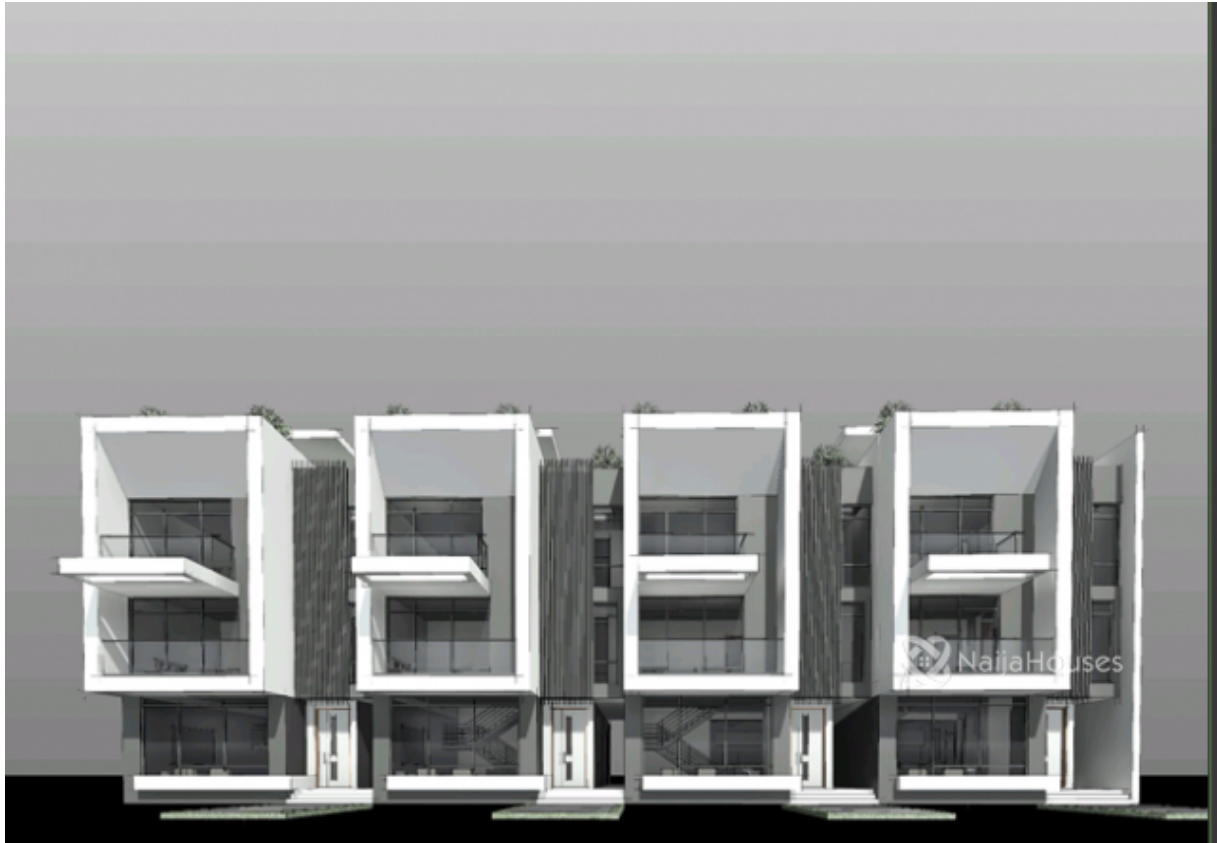


Jahi close to Living faith church, Jahi, Abuja, Abuja FCT



**Jahi close to Living faith church, Jahi, Abuja, Abuja FCT**

**NGN 250,000,000.00**

Ifedayo Ogunleye

Nigeria

Mobile: 07056144444

Office:

Fax:

[ifedayo.ogunleye@themlsproperties.com](mailto:ifedayo.ogunleye@themlsproperties.com)

## Property Details



Category **For Sale**



Status **Active**



Price/Sq Ft ₦



On  
naijahouses.com  
**472 days**



Type  
**Terraces**



Built

A proposed (Off-Plan) 4 bedroom terrace duplex with attached bq at Jahi, Abuja. it's an off-plan project on a tarred road close to Living faith church Jahi, Abuja and Aduvi International school, Jahi Abuja. The project is proposed to be completed within 8-Months.

Price: 250 Million.

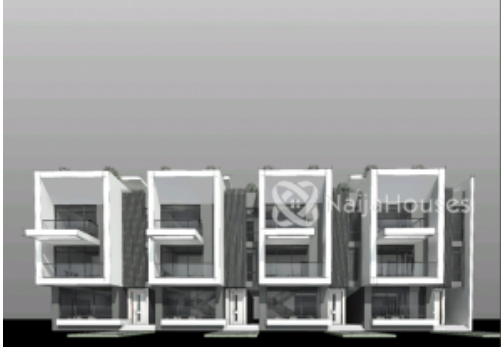
Pay 40% equity and balance within a Year.

Features:

Global CofO Title, Roof garden, pent floor terraces, garden and greenery, ample and independent parking space, drainage system, security, attached bq, double volume family lounge etc.



## Property Summary



### Features

No Records Found

Property ID:	P2945608777
Category:	For Sale
Market Status:	Active
Listed Price:	250000000
Year Built:	
Property Size:	Sq m
Building Size:	Sq m
Lot Size:	Sq m
Price per Sq. Meter:	
Bedroom:	4
Bathroom:	4
Toilets:	5
Parking:	
Service Fee:	
Other Fee:	
Tax Per Annum:	
Insurance Per Annum:	
HOA Per Annum:	

## Active Properties Nearby

Address	No. of Bedroom	No. of Bathroom	Price	Lot Size	Distance
This Home : Jahi close to Living faith church, Jahi, Abuja, Abuja FCT	4	4	250000000		0
Aravalli Hills, #5, Jahi, Abuja, Abuja FCT	1	2	17000000		0Km
Jahi, Abuja., Jahi, Abuja, Abuja FCT	4		120000000		0Km
JAHI, Jahi, Abuja, Abuja FCT	3		76000000		0Km
beside by Gilmore Junction, Jahi, Abuja, Abuja FCT	3	3	120000000		0Km
Jahi, Abuja, Jahi, Abuja, Abuja FCT	4		170000000		0Km
jahi, Jahi, Abuja, Abuja FCT	3	3	75000000		0Km
Jahi, Jahi, Abuja, Abuja FCT	0		100000000	900	0Km
Gilmore, Jahi, Abuja, Abuja FCT	4	4	220000000		0Km
Jahi, Jahi, Abuja, Abuja FCT	4	5	95000000		0Km
Jahi by Gilmore, Abuja, Jahi, Abuja, Abuja FCT	2		70000000		0Km
Jahi district, Jahi, Abuja, Abuja FCT	3	4	150000000		0Km
Jahi District , Jahi, Abuja, Abuja FCT	3	4	58000000		0Km
Gilmore, Jahi, Jahi, Abuja, Abuja FCT	0		250000000		0Km
jahi, #9, Jahi, Abuja, Abuja FCT	2	3	38000000		0Km
close to naval quarters, Jahi, Abuja, Abuja FCT	4	4	130000000		0Km
Jahi, Jahi, Abuja, Abuja FCT	0		280000000		0Km
Jahi, Jahi, Abuja, Abuja FCT	4		150000000		0Km
JAHI, ABUJA, Jahi, Abuja, Abuja FCT	5		180000000		0Km
Jahi Gilmor, Jahi, Abuja, Abuja FCT	5	5	400000000		0Km
jahi, Jahi, Abuja, Abuja FCT	4	4	250000000		0Km
Jahi District, Jahi, Abuja, Abuja FCT	4	4	270000000		0Km
Jahi, Jahi, Abuja, Abuja FCT	5		180000000		0Km
Jahi, Jahi, Abuja, Abuja FCT	7		1200000000		0Km
Jahi, Jahi, Abuja, Abuja FCT	3		90000000		0Km
Jahi Abuja, Jahi, Abuja, Abuja FCT	0		400000000		0Km
jahi, Jahi, Abuja, Abuja FCT	4	4	90000000		0Km
Gilmore Area , Jahi, Abuja, Abuja FCT	3		65000000		0Km
Jahi close to Living faith church, Jahi, Abuja, Abuja FCT	4	4	250000000		0Km

This report has been prepared based on information furnished by sources deemed reliable , however

no representation or warranty , either expressed or implied , is made to its accuracy.



Jahi, Gilmore , Jahi, Abuja, Abuja FCT	4		270000000		0Km
by Gilmore, Jahi, Abuja, Abuja FCT	3	3	3500000		0Km
jahi, Jahi, Abuja, Abuja FCT	4	4	150000000		0Km
Jahi, Jahi, Abuja, Abuja FCT	5		200000000		0Km
Around Navy, Jahi, Abuja, Abuja FCT	5		115000000		0Km
By ABC Cargo, Jahi, Abuja, Abuja FCT	0		400000000		0.4Km
peace apartment, Jahi, Abuja, Abuja FCT	3	3	42		0.4Km
Aduvie School, Jahi, Abuja, Abuja FCT	0		40000000		0.6Km
Close to Aduvi International School, Jahi, Abuja, Abuja FCT	5	5	450000000		0.6Km
Aduvie school Jahi, Jahi, Abuja, Abuja FCT	5		100000000		0.6Km
Jahi, Jahi, Abuja, Abuja FCT	2	3	450000000		1.1Km
jahi by Gilmore, Jahi, Abuja, Abuja FCT	0		150000000	1900	1.1Km
Jahi by Living Faith, Jahi, Abuja, Abuja FCT	5	5	700000000		1.2Km
By Living Faith , Jahi, Abuja, Abuja FCT	2	2	37000000		1.2Km
Jahi district, Jahi, Abuja, Abuja FCT	4	4	30000000		1.4Km
Cadastral Zone, Jahi, Abuja, Abuja FCT	4	4	70000000		1.7Km
Jahi District, Jahi, Abuja, Abuja FCT	4		130000000		2.1Km
jahi district, Jahi, Abuja, Abuja FCT	4	5	65000000		2.1Km
Jahi DISTRICT, Jahi, Abuja, Abuja FCT	0		130000000		2.1Km
Jahi District, Jahi, Abuja, Abuja FCT	4		130000000		2.1Km
jahi district, Jahi, Abuja, Abuja FCT	0		55000000		2.1Km
jahi district, Jahi, Abuja, Abuja FCT	4	4	90000000		2.1Km
jahi district , Jahi, Abuja, Abuja FCT	3	4	55000000		2.1Km
jahi , Jahi, Abuja, Abuja FCT	4		100000000		2.3Km
Jahi, Jahi, Abuja, Abuja FCT	4		120000000		2.3Km
Gishiri, Jahi, Jahi, Abuja, Abuja FCT	0		64000000		2.3Km
Jahi, Jahi, Abuja, Abuja FCT	3		70000000		2.3Km
jahi, Jahi, Abuja, Abuja FCT	4	4	70000000		2.3Km
Jahi, Jahi, Abuja, Abuja FCT	2	2	70000000		2.3Km
Jahi district, Jahi, Abuja, Abuja FCT	4	5	70000000		2.3Km
jahi district, Jahi, Abuja, Abuja FCT	4	4	65000000		2.3Km
jahi district, Jahi, Abuja, Abuja FCT	4	4	70000000		2.3Km
jahi, Jahi, Abuja, Abuja FCT	4		75000000		2.3Km
jahi, Jahi, Abuja, Abuja FCT	3		45000000		2.3Km
Jahi, Abuja, Jahi, Abuja, Abuja FCT	4		85000000		2.3Km
Jahi, Abuja, Jahi, Abuja, Abuja FCT	0		700000000		2.3Km

Edenmbe street, Jahi, Abuja, Abuja FCT	4		270000000		2.3Km
Gilmore by Jahi, Jahi, Abuja, Abuja FCT	4	4	75000000		2.3Km
Edenmbe, Jahi, Abuja, Abuja FCT	4	5	70000000		2.3Km
next cash and carry, Jahi, Abuja, Abuja FCT	3		55000000		2.3Km
By Gilmore, Jahi, Abuja, Abuja FCT	2	2	40000000		4Km
By Gilmore, Jahi, Abuja, Abuja FCT	4	5	40000000		4Km
By Gilmore construction, Jahi, Abuja, Abuja FCT	3	2	45000000		4Km

## Sold Properties Nearby

Address	No. of Bedroom	No. of Bathroom	Price	Lot Size	Distance
No Records Found					



## Average Prices Nearby Active

Month	Average Price	Maximum Price	Minimum Price	Total No of Properties
No Records Found				



## Average Prices Nearby Sold

Month	Average Price	Maximum Price	Minimum Price	Total No of Properties
-------	---------------	---------------	---------------	------------------------

No Records Found

## Property Photos

